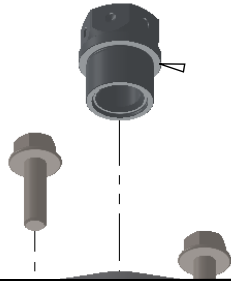


BOM FOR ASSEMBLY

180



NO.	PART NUMBER	DESCRIPTION	QTY.
1	MSIsub02-19-001A	Front GR Top Mounts	2
2	DMS-mnt-2pcs-002a	2pcs Street Bearing Housing	2
3	MSI-bearing-002	Std 18mm ID Street Bearing	2
4	MSI-bearing-001a	33mm Circlip	2
5	MSI-M6x1.0x20-YZFB	M6 Yellow Zinc Flange Bolt	4
6	DMS-MNTPRT-12x1.25	M12 x 1.25 Tube Nut	2
7	DMS-mntprt-15-001	Std 15.1mm x 7mm tall ferrule	2
8	MSI-M8x1.25x20-YZFB	M8 Yellow Zinc Flange Bolt	4